



TK International  
020 7794 8700  
www.t-k.co.uk

Residential Sales  
Residential Lettings  
Property Management

Sales Office:  
9 Heath Street  
Hampstead  
London NW3 6TP  
E: sales@t-k.co.uk

Lettings Office:  
16-18 Heath Street  
Hampstead  
London NW3 6TE  
E: lettings@t-k.co.uk

tk.international  
TK International  
TK International

Est.  
1998



## **Canfield Gardens South Hampstead NW6**

A superb 3 double bedroom, two-bathroom garden apartment (173 sq m/1,865 sq ft) located in this premier residential road. The property offers luxurious family accommodation with state of the art fixtures and fittings throughout. Further benefits include a bright open place modern kitchen, dining and living room, with doors leading to a stunning large south facing rear garden.

Canfield Gardens is a tree-lined street superbly located for easy access to the Finchley Road. Excellent local supermarkets and stores are just moments away, as is the O2 centre with its varied leisure, dining and shopping facilities. Transport links are equally impressive with excellent road links, frequent and numerous bus routes, Jubilee & Metropolitan lines at Finchley Road Underground Station and also equidistant to the London Overground/Underground at West Hampstead Stations.

**Per Week**

**SOLE AGENT**

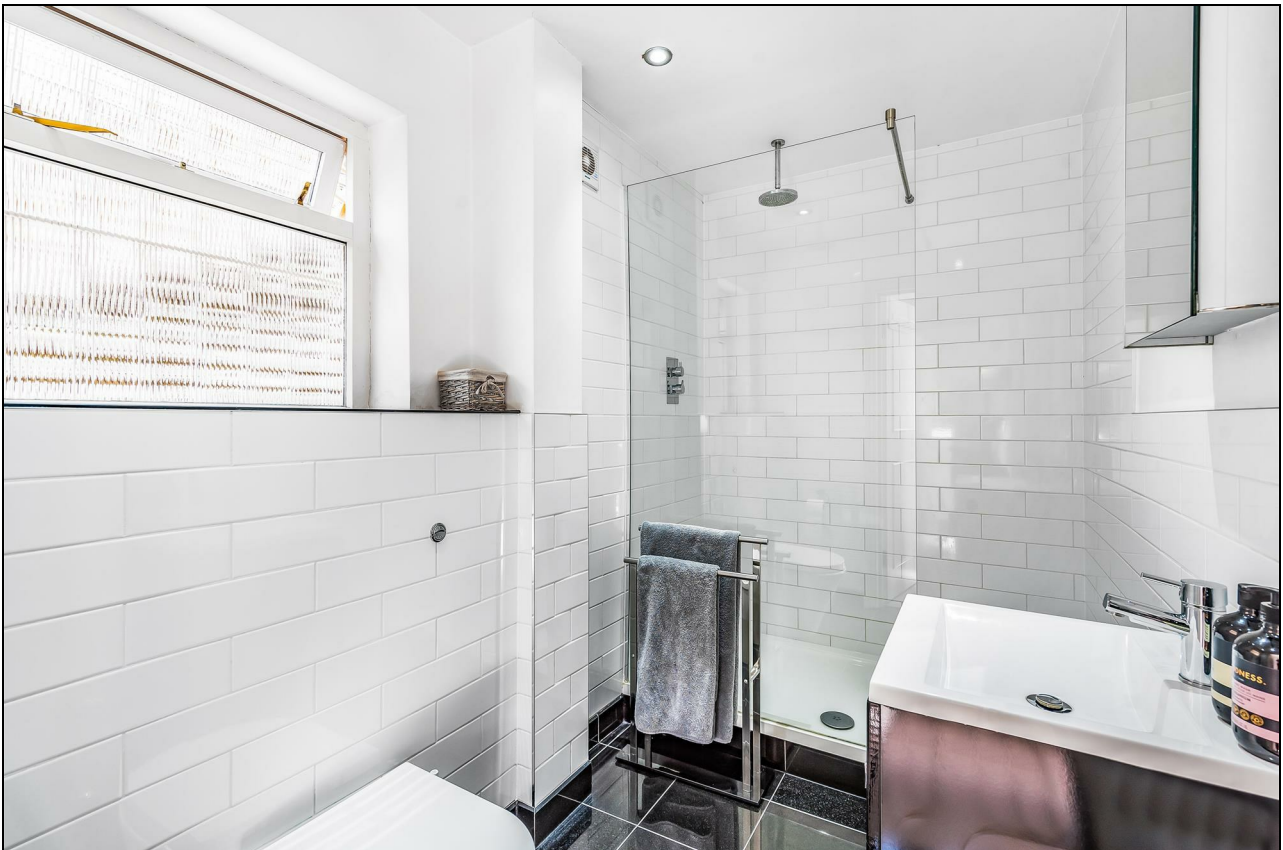










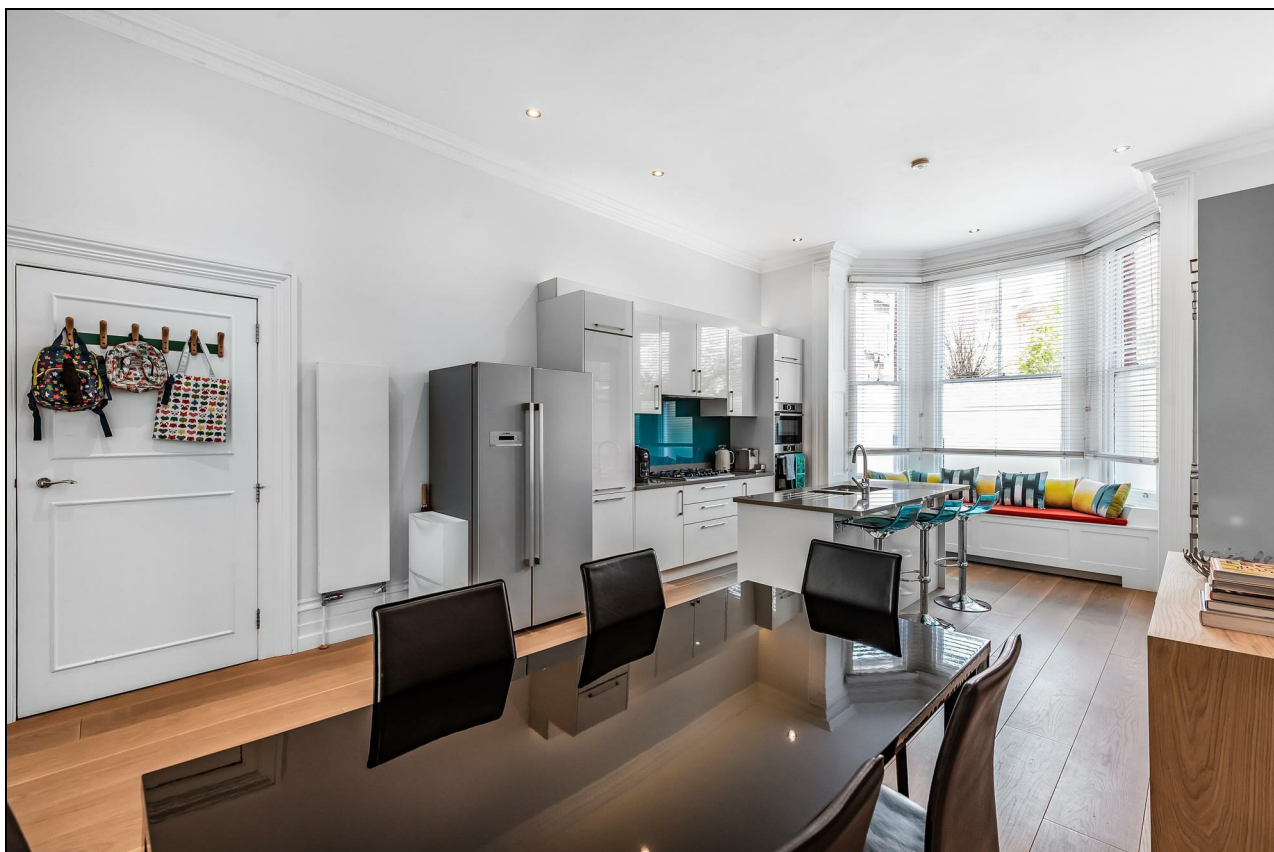










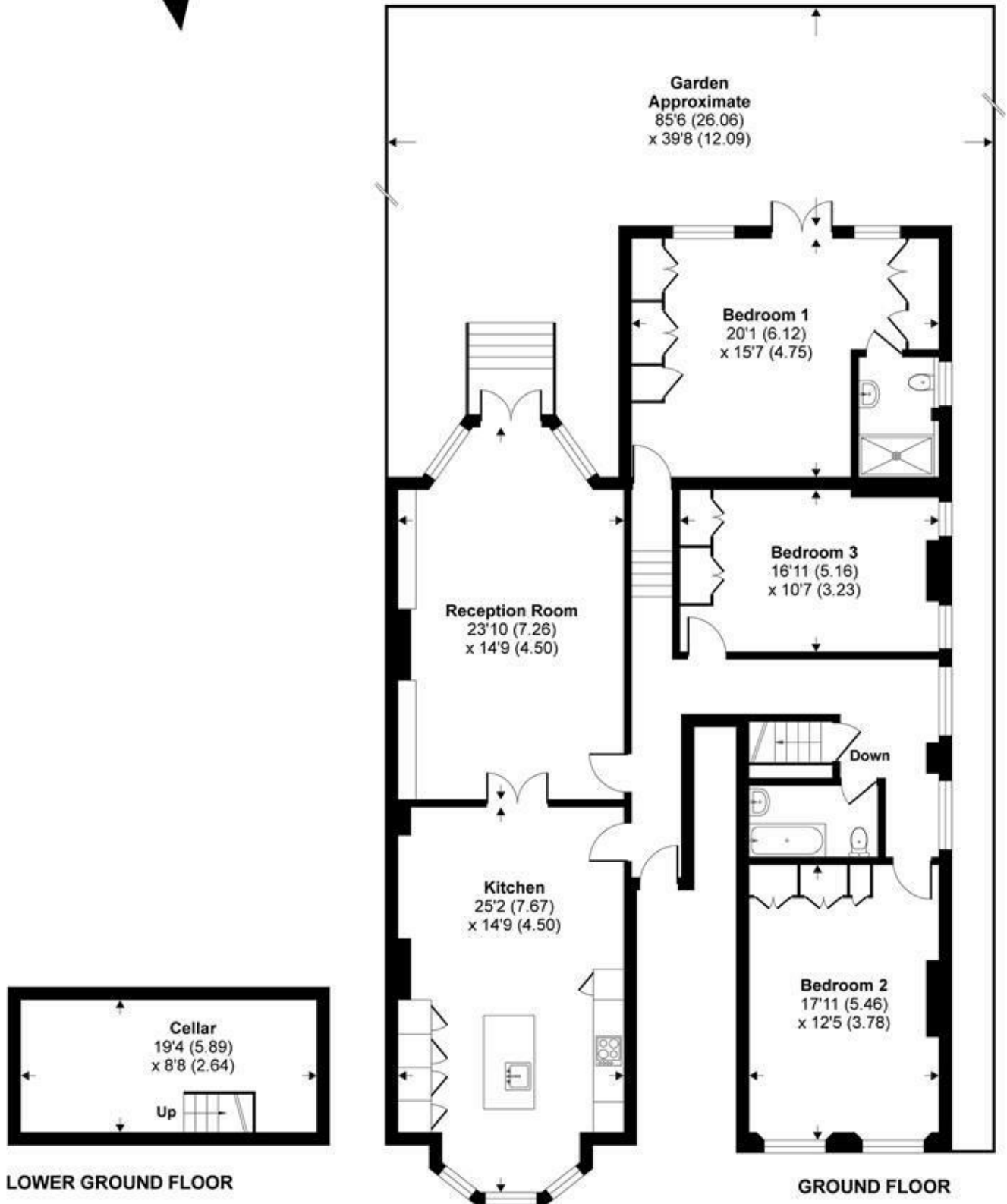




# Canfield Gardens, London, NW6

Approximate Area = 1865 sq ft / 173 sq m

For identification only - Not to scale



Certified  
Property  
Measurer

Floor plan produced in accordance with RICS Property Measurement Standards incorporating International Property Measurement Standards (IPMS2 Residential). © nichecom 2021.  
Produced for TK (Lettings) Ltd. REF: 706996